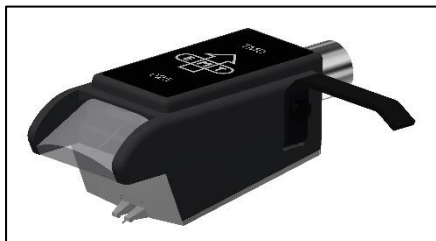


DATASHEET TONDOSE MONO



TMD 015 (for late/up-to-date mono LPs)

TMD 025 (for mono LPs)

TND 065 (for shellac records)

Broadcast Mono Cartridge

Specification	TMD 015	TMD 025	TND 065
Diamond:	SPH 15µm	SPH 25µm	SPH 65µm
Cantilever:	Aluminium		
Transducer:	MC Mono		
Connection:	EMT (Standard) Option INT (Ortofon A compatible) Option X (SME compatible)		
Vertical Tracking Angle:	23°		
Weight:	17.5g		
Tracking force:	2,5g		
Output Transfer Level:	0,21mVs/cm		
Compliance:	12µm/mN		
Frequency response: ±2dB:	20 - 20'000Hz 40 - 12'500Hz	20 - 18'000Hz 40 - 12'500Hz	20-16'000Hz 40-12'500Hz
Impedance:	24Ω		
Recommended load:	200 - 300Ω		
Nomenclature			
TMD:	Tondose Micro-groove Diamond		
TND:	Tondose Normal-groove Diamond		
015 / 025 / 065:	Stylus tip radius in microns		
SPH:	Spherical diamond shape		